

The importance of Environmental Social Governance.

Our vision.



Our vision is to deliver industry leading developments that demonstrate a responsible approach to ESG issues aligned to best practice. We do this through the delivery of our objectives.

Environmental.

- Support the transition to Net Zero through minimising carbon emissions and energy consumption.
- Seek to protect and enhance the built and natural environment.
- Adopt a circular approach, eliminating the use of hazardous materials, minimising waste, prioritising reuse and encouraging the responsible sourcing of materials through the design and construction process.

Social.

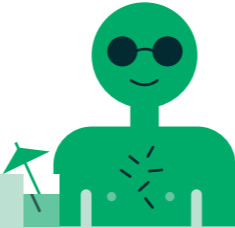
- Provide a healthy and safe environment for our employees including appropriate working hours, holiday entitlement and working conditions.
- Respect our employees and supply chain through inclusivity, equality and diversity with zero tolerance to discrimination and harassment.
- Generate social value for the communities within which we work.

Governance.

- Communicate our policies and strategy to our stakeholders and supply chain.
- Ensure fair and equitable business practices with clients, consultants and stakeholders by preventing corruption (including bribery), anti-competitive or inappropriate practices and disclosing conflicts of interest.
- Protect information provided by clients and third parties through cyber security measures.
- Monitor and disclose our performance to our stakeholders.

EMISSIONS

NET ZERO NOW!



For more information:

Luke Wainwright
lwainwright@co-re.co.uk
+44 (0) 7949 235 730

Alex Parsons
aparsons@co-re.co.uk
+44 (0) 77 8079 7823

CO-RE
8 Fredericks Place
London EC2R 8AB
+44 (0) 20 7814 1000

co-re.co.uk

Printed on Shiro Echo 100% recycled paper using vegetable based inks.
Design by sectorlight.com

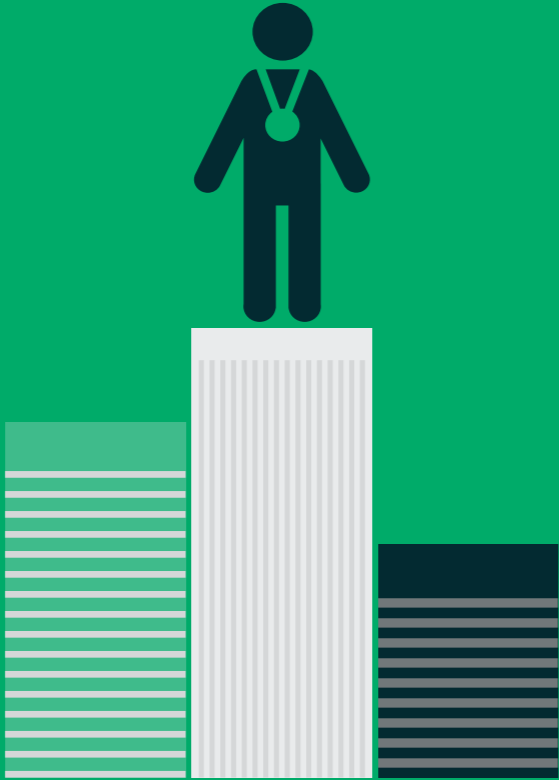
The importance of ESG.

CO-RE are committed to delivering best in class developments that aim to leave the environment in a better place than when we found it, by improving the wellbeing of building users and ensuring a positive contribution to society.

As a Central London development specialist, we champion great design and encourage collaboration between our employees, projects teams, clients and investors, to achieve long term value.

We believe that it is our responsibility to protect and enhance the needs of current and future generations and are focused on making a positive difference to the built and natural environment going beyond compliance measures, to actively engage with new thinking and research.

The following four principles shape our approach to integrating ESG within our business activities:



Empowering design teams.

Our approach is not prescriptive and we seek to empower our design teams and supply chain to work collaboratively with us to deliver the right solutions for the project context.



Encouraging innovation.

We have a track record of delivering innovative developments across London and believe it is in the long term interest of our clients to consider designs that account for sustainability and wellbeing. We believe collaboration is the most effective method for this.



Flexibility in approach.

CO-RE are mindful that every project and team are different. It is therefore important that our approach is tailored to the specific project context. We do not always have direct control but we commit to support all client and employee aspirations as much as possible.



Continual improvement.

Our approach will continue to evolve and develop as we learn from our past performance and industry trends. Regular reviews and updates of our strategy are therefore built into our approach.

